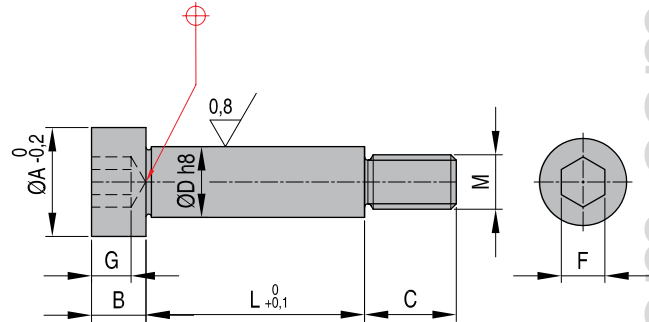


PM

Винты ступенчатые нержавеющие

Материал: 35 NC 6 ±1100-1200 Н/мм²



Номер M x L	A	B	C	D	F	G
PM 5x6	9	4	8	6	3	2,5
PM 5x8	9	4	8	6	3	2,5
PM 5x10	9	4	8	6	3	2,5
PM 5x12	9	4	8	6	3	2,5
PM 5x14	9	4	8	6	3	2,5
PM 5x16	9	4	8	6	3	2,5
PM 5x20	9	4	8	6	3	2,5
PM 5x25	9	4	8	6	3	2,5
PM 5x30	9	4	8	6	3	2,5
PM 5x32	9	4	8	6	3	2,5
PM 5x40	9	4	8	6	3	2,5
PM 5x50	9	4	8	6	3	2,5
PM 5x60	9	4	8	6	3	2,5
PM 5x63	9	4	8	6	3	2,5
PM 6x6	11	5	10	8	4	3,0
PM 6x8	11	5	10	8	4	3,0
PM 6x10	11	5	10	8	4	3,0
PM 6x12	11	5	10	8	4	3,0
PM 6x14	11	5	10	8	4	3,0
PM 6x16	11	5	10	8	4	3,0
PM 6x20	11	5	10	8	4	3,0
PM 6x25	11	5	10	8	4	3,0
PM 6x30	11	5	10	8	4	3,0
PM 6x32	11	5	10	8	4	3,0
PM 6x40	11	5	10	8	4	3,0
PM 6x50	11	5	10	8	4	3,0
PM 6x60	11	5	10	8	4	3,0
PM 6x70	11	5	10	8	4	3,0
PM 6x80	11	5	10	8	4	3,0
PM 6x90	11	5	10	8	4	3,0
PM 6x100	11	5	10	8	4	3,0
PM 6x110	11	5	10	8	4	3,0
PM 8x6	14	6	12	10	5	4,0
PM 8x8	14	6	12	10	5	4,0
PM 8x10	14	6	12	10	5	4,0
PM 8x12	14	6	12	10	5	4,0
PM 8x14	14	6	12	10	5	4,0
PM 8x16	14	6	12	10	5	4,0
PM 8x20	14	6	12	10	5	4,0
PM 8x25	14	6	12	10	5	4,0
PM 8x30	14	6	12	10	5	4,0
PM 8x32	14	6	12	10	5	4,0
PM 8x40	14	6	12	10	5	4,0
PM 8x50	14	6	12	10	5	4,0
PM 8x60	14	6	12	10	5	4,0
PM 8x70	14	6	12	10	5	4,0
PM 8x80	14	6	12	10	5	4,0
PM 8x90	14	6	12	10	5	4,0
PM 8x100	14	6	12	10	5	4,0
PM 8x110	14	6	12	10	5	4,0

Номер M x L	A	B	C	D	F	G
PM 8x120	14	6	12	10	5	4,0
PM 8x125	14	6	12	10	5	4,0
PM 8x140	14	6	12	10	5	4,0
PM 8x160	14	6	12	10	5	4,0
PM 10x8	18	8	16	12	6	5,0
PM 10x10	18	8	16	12	6	5,0
PM 10x12	18	8	16	12	6	5,0
PM 10x14	18	8	16	12	6	5,0
PM 10x16	18	8	16	12	6	5,0
PM 10x20	18	8	16	12	6	5,0
PM 10x25	18	8	16	12	6	5,0
PM 10x30	18	8	16	12	6	5,0
PM 10x32	18	8	16	12	6	5,0
PM 10x40	18	8	16	12	6	5,0
PM 10x50	18	8	16	12	6	5,0
PM 10x60	18	8	16	12	6	5,0
PM 10x70	18	8	16	12	6	5,0
PM 10x80	18	8	16	12	6	5,0
PM 10x90	18	8	16	12	6	5,0
PM 10x100	18	8	16	12	6	5,0
PM 10x110	18	8	16	12	6	5,0
PM 10x120	18	8	16	12	6	5,0
PM 10x125	18	8	16	12	6	5,0
PM 10x140	18	8	16	12	6	5,0
PM 10x160	18	8	16	12	6	5,0
PM 10x200	18	8	16	12	6	5,0
PM 12x10	22	10	20	16	8	6,0
PM 12x12	22	10	20	16	8	6,0
PM 12x14	22	10	20	16	8	6,0
PM 12x16	22	10	20	16	8	6,0
PM 12x20	22	10	20	16	8	6,0
PM 12x25	22	10	20	16	8	6,0
PM 12x30	22	10	20	16	8	6,0
PM 12x32	22	10	20	16	8	6,0
PM 12x40	22	10	20	16	8	6,0
PM 12x50	22	10	20	16	8	6,0
PM 12x60	22	10	20	16	8	6,0
PM 12x70	22	10	20	16	8	6,0
PM 12x80	22	10	20	16	8	6,0
PM 12x90	22	10	20	16	8	6,0
PM 12x100	22	10	20	16	8	6,0
PM 12x110	22	10	20	16	8	6,0
PM 12x120	22	10	20	16	8	6,0
PM 12x125	22	10	20	16	8	6,0
PM 12x140	22	10	20	16	8	6,0
PM 12x160	22	10	20	16	8	6,0
PM 12x200	22	10	20	16	8	6,0
PM 12x250	22	10	20	16	8	6,0
PM 16x16	28	12	25	20	10	8,0
PM 16x20	28	12	25	20	10	8,0

Номер M x L	A	B	C	D	F	G
PM 16x25	28	12	25	20	10	8,0
PM 16x30	28	12	25	20	10	8,0
PM 16x32	28	12	25	20	10	8,0
PM 16x40	28	12	25	20	10	8,0
PM 16x50	28	12	25	20	10	8,0
PM 16x60	28	12	25	20	10	8,0
PM 16x70	28	12	25	20	10	8,0
PM 16x80	28	12	25	20	10	8,0
PM 16x90	28	12	25	20	10	8,0
PM 16x100	28	12	25	20	10	8,0
PM 16x110	28	12	25	20	10	8,0
PM 16x120	28	12	25	20	10	8,0
PM 16x125	28	12	25	20	10	8,0
PM 16x140	28	12	25	20	10	8,0
PM 16x160	28	12	25	20	10	8,0
PM 16x200	28	12	25	20	10	8,0
PM 16x250	28	12	25	20	10	8,0
PM 20x20	36	16	32	25	14	11,0
PM 20x25	36	16	32	25	14	11,0
PM 20x30	36	16	32	25	14	11,0
PM 20x32	36	16	32	25	14	11,0
PM 20x40	36	16	32	25	14	11,0
PM 20x50	36	16	32	25	14	11,0
PM 20x60	36	16	32	25	14	11,0
PM 20x70	36	16	32	25	14	11,0
PM 20x80	36	16	32	25	14	11,0
PM 20x90	36	16	32	25	14	11,0
PM 20x100	36	16	32	25	14	11,0
PM 20x110	36	16	32	25	14	11,0
PM 20x120	36	16	32	25	14	11,0
PM 20x125	36	16	32	25	14	11,0
PM 20x140	36	16	32	25	14	11,0
PM 20x160	36	16	32	25	14	11,0
PM 20x200	36	16	32	25	14	11,0
PM 20x250	36	16	32	25	14	11,0
PM 24x50	45	20	40	32	17	12,0
PM 24x60	45	20	40	32	17	12,0
PM 24x70	45	20	40	32	17	12,0
PM 24x80	45	20	40	32	17	12,0
PM 24x90	45	20	40	32	17	12,0
PM 24x100	45	20	40	32	17	12,0
PM 24x110	45	20	40	32	17	12,0
PM 24x120	45	20	40	32	17	12,0
PM 24x125	45	20	40	32	17	12,0
PM 24x160	45	20	40	32	17	12,0
PM 24x200	45	20	40	32	17	12,0
PM 24x250	45	20	40	32	17	12,0

www.system.com.ru

CAD reference point