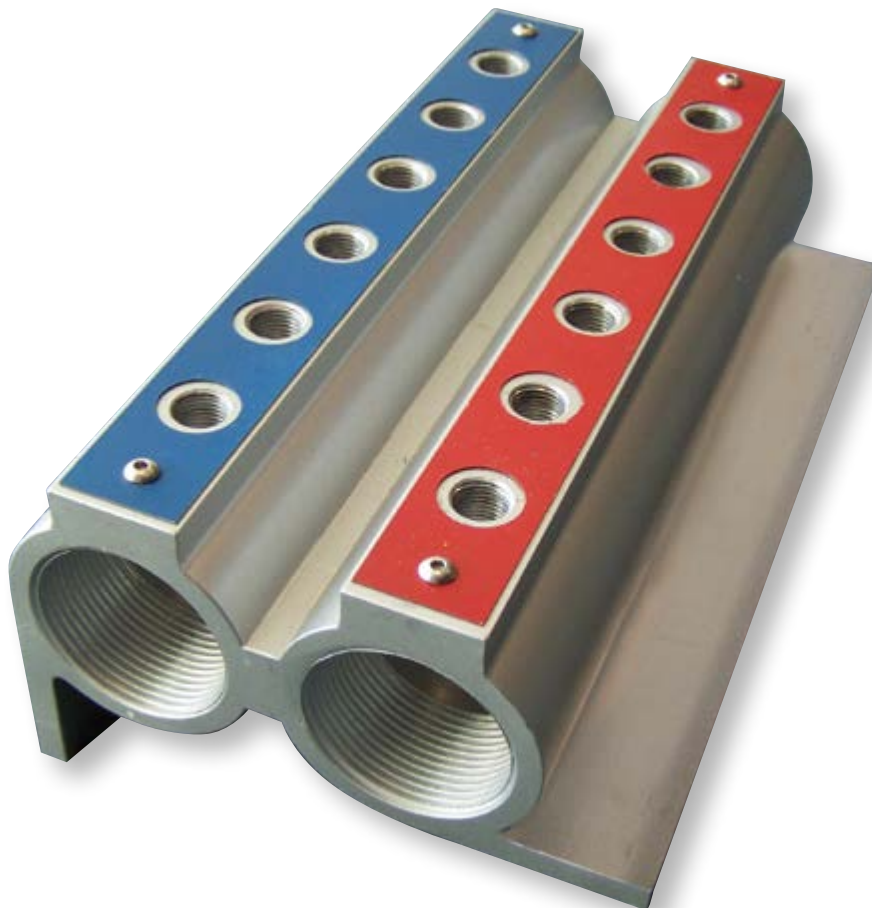




Cooling Manifold

- no loss in pressure due to long hoses or too many flow meters
- efficient parallel moldcooling with shorter cycle times
- easily install and group cooling connections and hoses
- in- and outlets can be connected separately
- hose lengths can be reduced, enabling the molder to work with lower pressure in the system
- cooling manifold can be installed horizontally and vertically

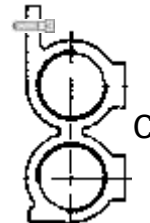


Info

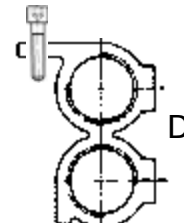
Cooling Manifold

- One piece Aluminium Extrusion Anodized
- Corrosion resistant / No Welds
- Standard Inlets: 1 1/2" (2 included per system)
- Predrilled Mounting Holes
- Red / Blue Marking plate Included
- Specials upon demand

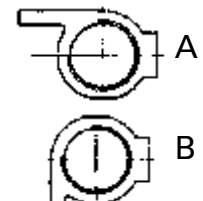
Variants



Double option
On side of
the mold/
machine



Double option
On top
of mold/
machine



Single option
(Upon
request)

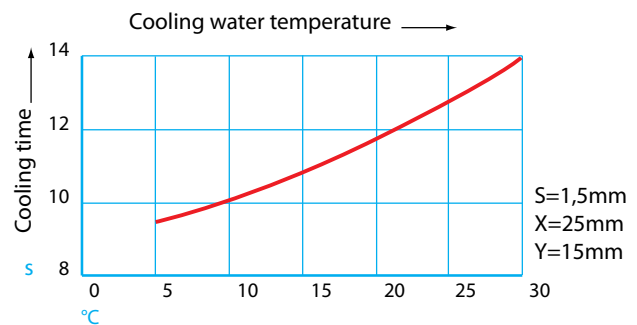
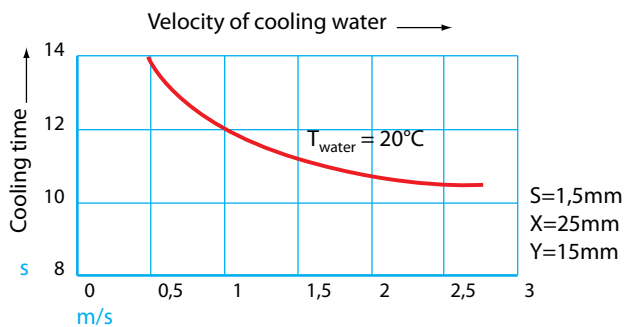


Traditional cooling connection

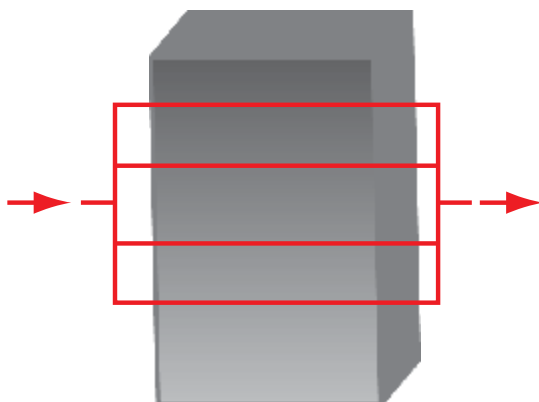


DME cooling manifold

Info

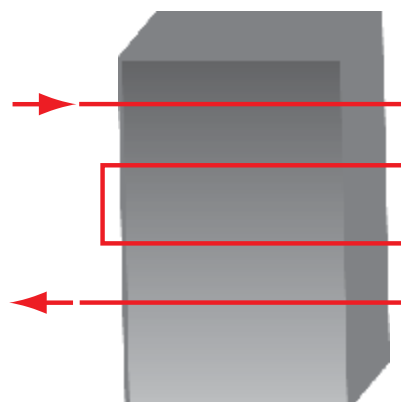


Parallel



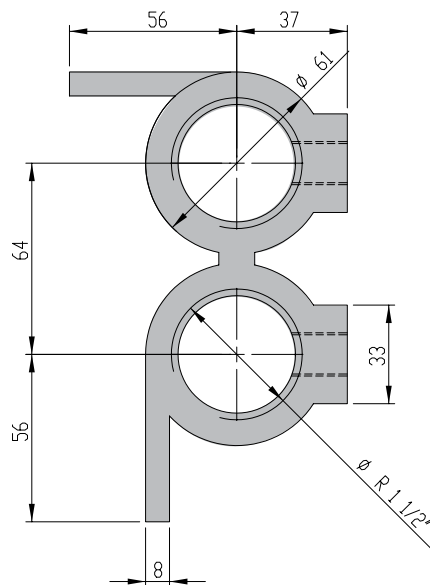
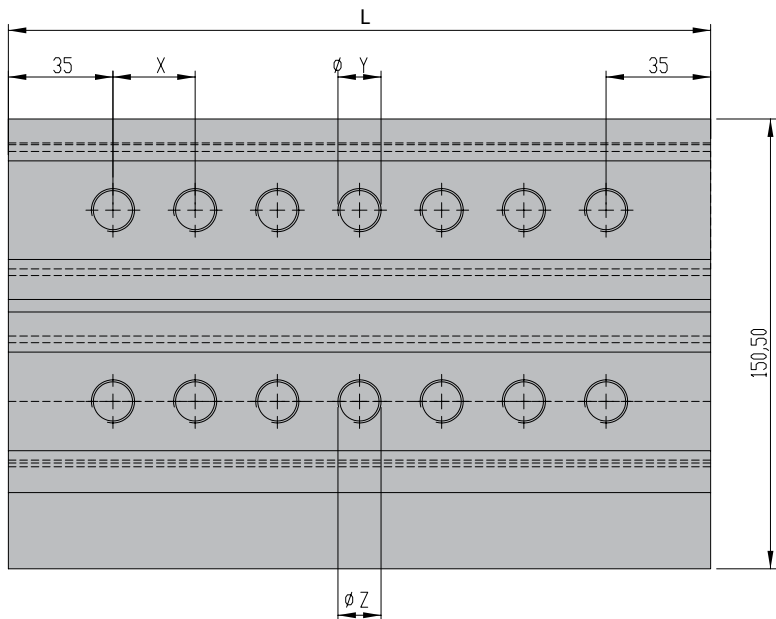
High flow
Low pressure loss

Serial



Low flow
High pressure loss

Example



For use	Y/Z	X
Nipple/plug	1/4" 3/8" M14x1,5	27,50 mm
Nipple/plug	1/2" / M16x1,5	33,00 mm
Nipple/plug	3/4" / M24x1,5	41,25 mm
Valves	upon request	Minimum 50 when using collector valves with handle

How to order*

- Number of holes per row
- Thread upper row "Y"
- Thread lower row "Z"
- Distance "X"
- Total length manifold

Example:

COLM
REF

2x7
N°
holes

3/8
Thread
Y

3/8
Thread
Z

33
X

268
Total
Length

mandatory info to be supplied by customer

Standard accessories available



Collector Valve with Handle 1/2"
REF: CVH12

For use with X= 41.5 mm



GK Extension Brass 1/2"
Length 50 mm
REF: GKMF12
To be used for second row



FLOW METER
with Mechanical Regulation
BSP 1/2" (Female) - BSP 3/4" (Male)
Hexagonal: SW19
Full Length: 81mm
Flow capacity: 2 - 8 lt/min
Temperature Range: +0°C - +100 °C
Working Pressure: max 10 Bar
Springs: Stainless Steel
Indicator Plastic Seals: Buna
Article number: FM 1234



Standard Inlets:
1 1/2": REF: COMFD0001

* Upon request

