

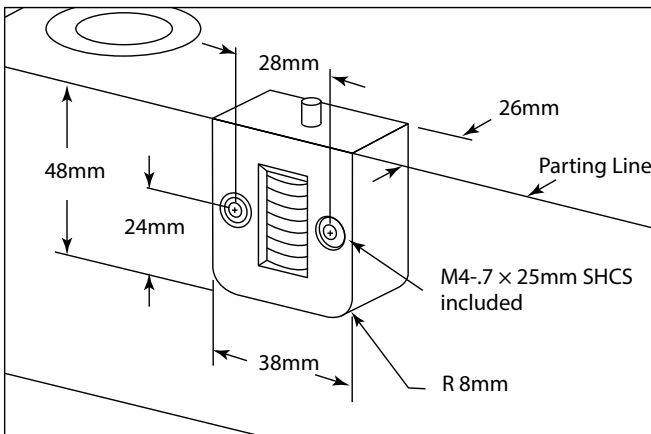


Accurately monitors mold operation, validates process monitoring data, and assists mold maintenance procedures.

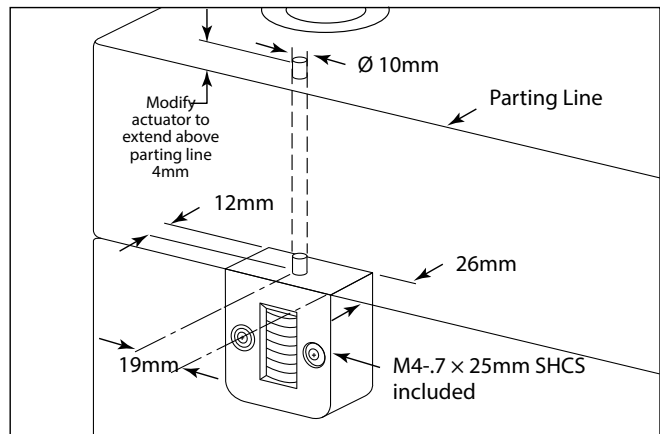
With a maximum operating temperature of 250°F (121°C), this precise device uses a non-resettable, mechanical, 7-digit counter to record the number of times a mold closes. Easily mountable to accommodate changeovers for different mold insert heights, the unit's counting mechanism relies on a sensor that detects when the mold has closed.

Benefits

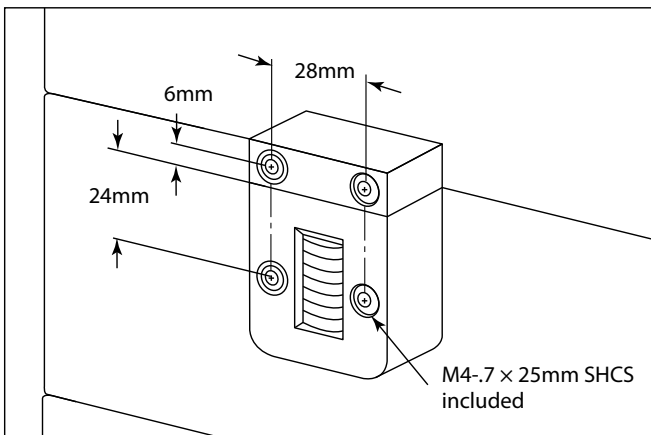
- Positively monitors mold activity
- Confirms process monitoring data
- Maximizes mold maintenance procedures
- Enables access to mold information online at www.moldmonitor.com
- Glass-filled nylon housing for rugged durability



Parting Line Mount		Parting line mount makes unit easily visible.
CVPL100D		Inch Standard
CVPL200D		Metric Standard



Internal Extension Mount		Machinable 8" (203mm) extension enables support plate or rail installation.
CVIN100D		Inch Standard
CVIN200D		Metric Standard



External Mount		Pocket machining not necessary. Designed specifically for retrofit applications.
CVEX100D		Inch Standard
CVEX200D		Metric Standard

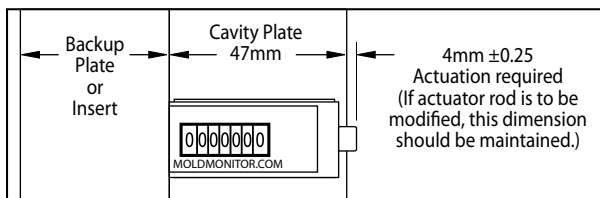
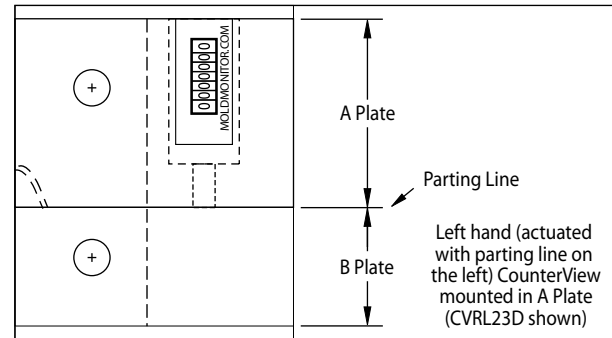
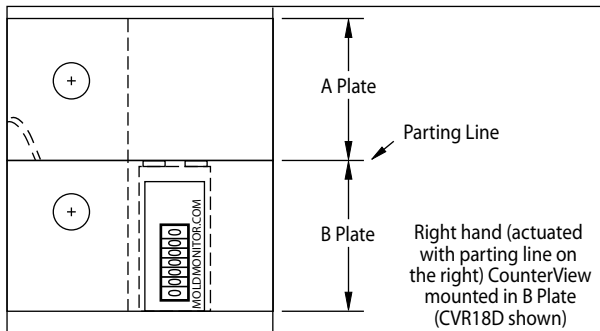
Each CounterView has a unique serial number that allows users to view mold information online at moldmonitor.com.

CounterView is a registered trademark of Progressive Components.
U.S.# 5,571,539
Others issued and pending

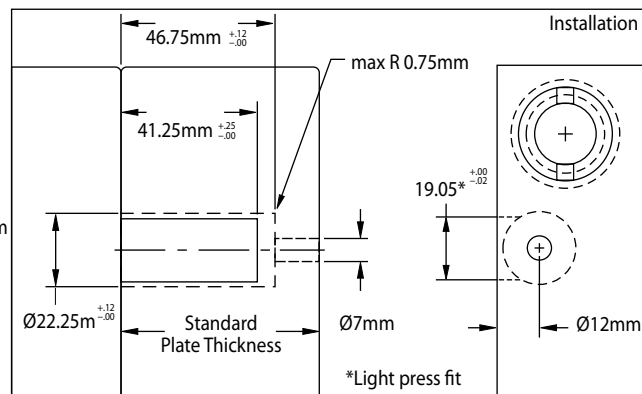
CounterView® mold counter, R series

CV

The CounterView accurately monitors mold operation, validates process monitoring data, and assists mold maintenance procedures. With a maximum operating temperature of 121°C, this precise unit has a non-resettable, mechanical, 7-digit counter and a glass-filled nylon housing for rugged durability.



The R-Series CounterView can be installed in the A or B plates with a minimum thickness of 47mm. Larger plates utilize a threaded rod (included with each) that is pre-machined to the appropriate length for standard plate thicknesses to provide consistent actuation.



Parting Line at Left



Parting Line at Right



REF	Nominal plate thickness	REF	Nominal plate thickness
CVRL56D	56	CVR56D	56
CVRL66D	66	CVR66D	66
CVRL76D	76	CVR76D	76
CVRL96D	96	CVR96D	96

Inch Standards upon request

Inch Standards upon request

Each R-Series CounterView includes the actuator. All require attachment of the actuator rod to the threaded unit.

Replacement actuator rods

REF	Round CV Rod Length
RCV56	8.38mm
RCV66	18.39mm
RCV76	28.37mm
RCV96	48.38mm

Inch Standards upon request