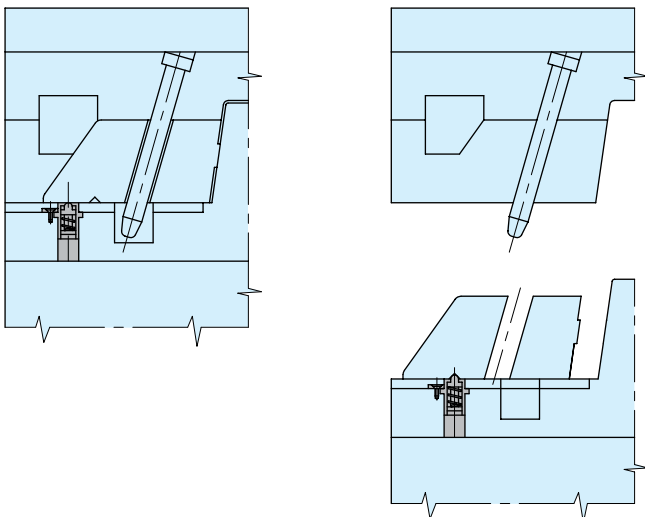
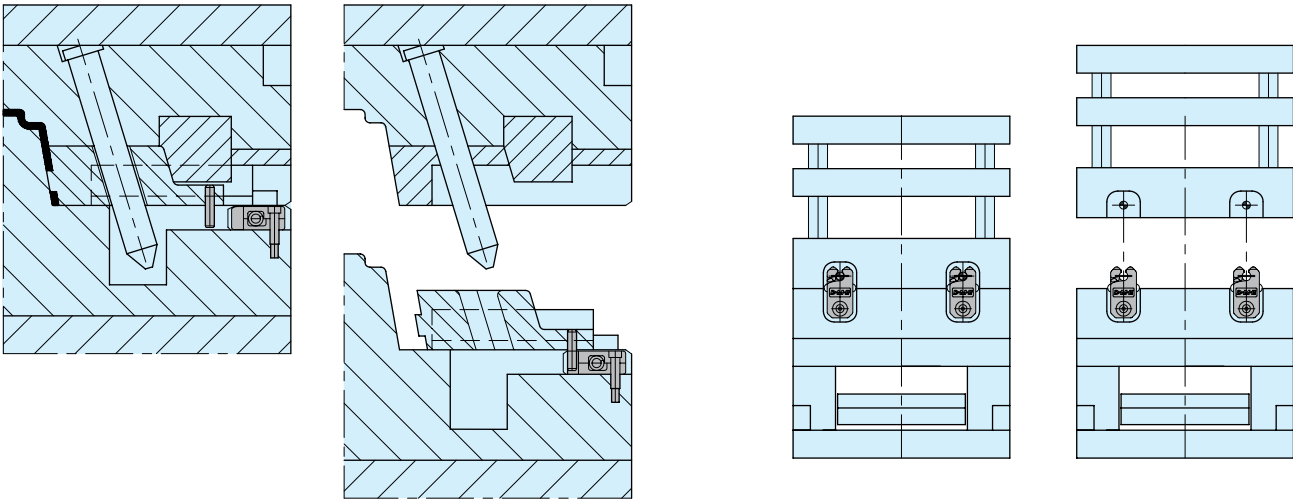


## Info PSR-PSM-MRT-SRTM



**DME** Slide Retainers provide a compact and economical means of slide retention which obsoletes the cumbersome external spring or hydraulic methods. Interference with machine tie bars or safety gates is no longer a problem.



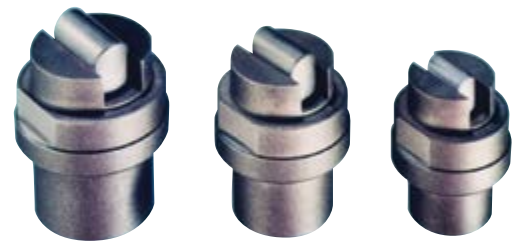
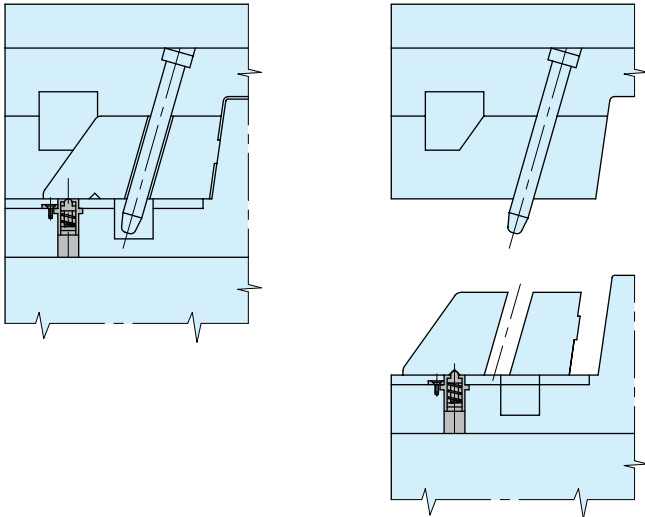
Available in three sizes with increasing weight holding capacities, the Slide Retainers can be used individually or in multiples for larger or heavier slides.

### 3 types to choose from:

1. **MRT:** the dowel pin installed in the slide positively locks into the retainer until disengaged by the mold's closing action. Designed with a generous lead-in at the socket opening so the dowel pin will enter the socket even if there is a slight misalignment between the retainer and the pin.
2. **PSM:** similar to MRT but spring is completely enclosed and protected from contamination.
3. **PSR:** works without dowel pin so slide can be removed without removing slide retainer. Small in size yet strong holding power.

Mini-Might™ Slide Retainers

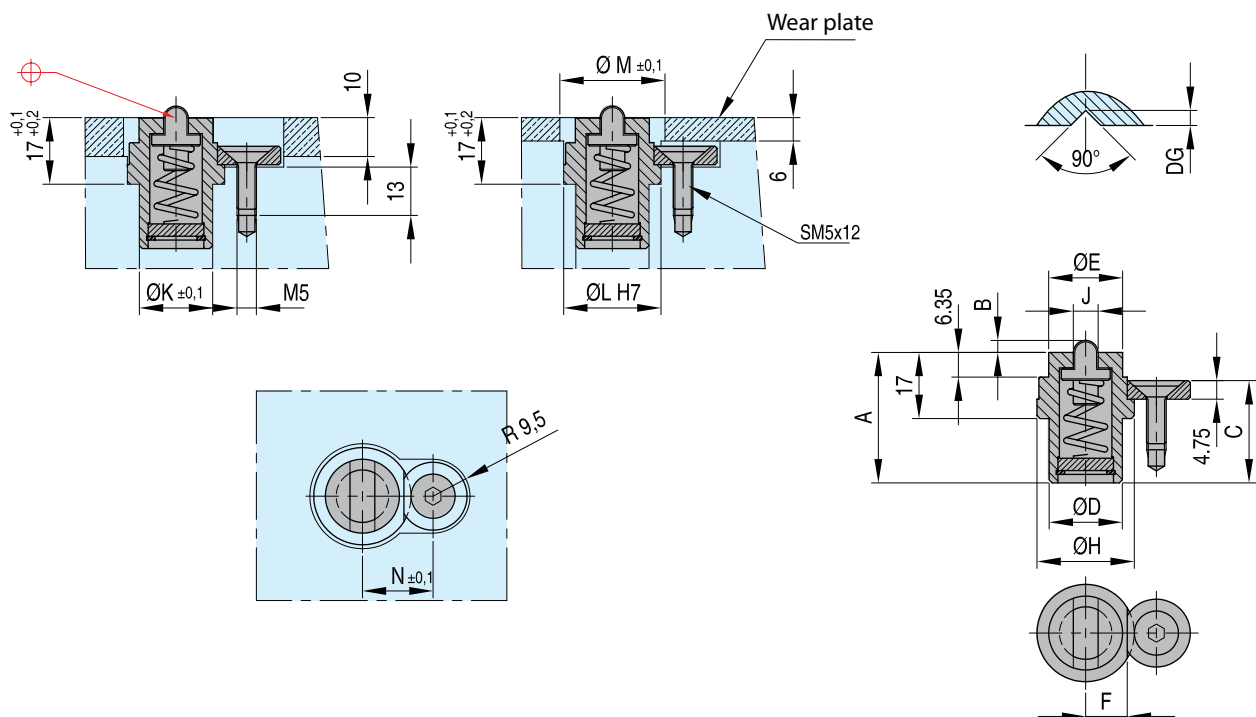
PSR



Small in size yet strong holding power  
Product design facilitates easy installation  
Slide can be removed without the removal of the slide retainer  
Self-contained design

Line contact engagement  
Three retaining rates: 44, 88 and 176 Newton  
Max. temperature 120°C

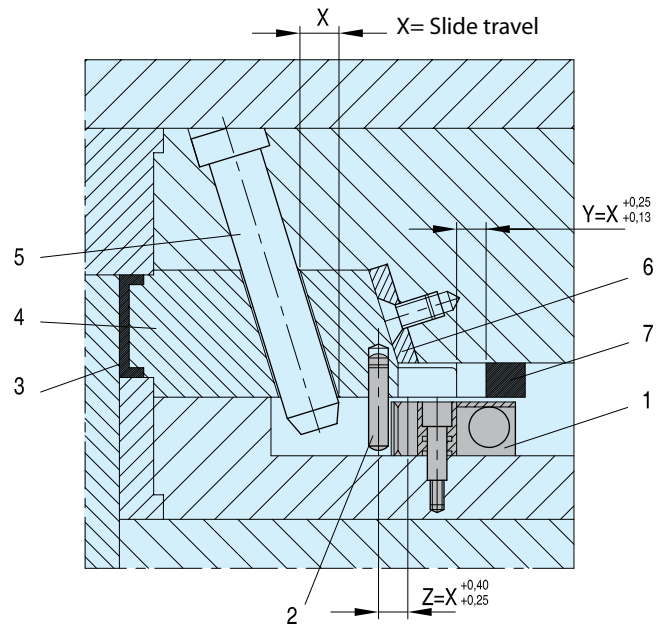
Installation instructions



REF	Mini Might™ Slide retainer								Max. Slide weight Kg	DG mm	Pocket dimensions			
	A	B	C	D	E	F	H	J			K	L	M	N
<b>PSR 1000</b>	27,43	1,83	20,20	15,75	16	9,52	22	17,5	4,4	2,3	15,87	22	24	17,0
<b>PSR 2000</b>	33,53	3,07	26,30	18,8	19	10,67	25	21,5	8,8	3,9	19,05	25	27	18,2
<b>PSR 4000</b>	32,00	3,78	24,76	22,1	22	11,86	28	31,5	17,6	4,9	22,23	28	30	19,4

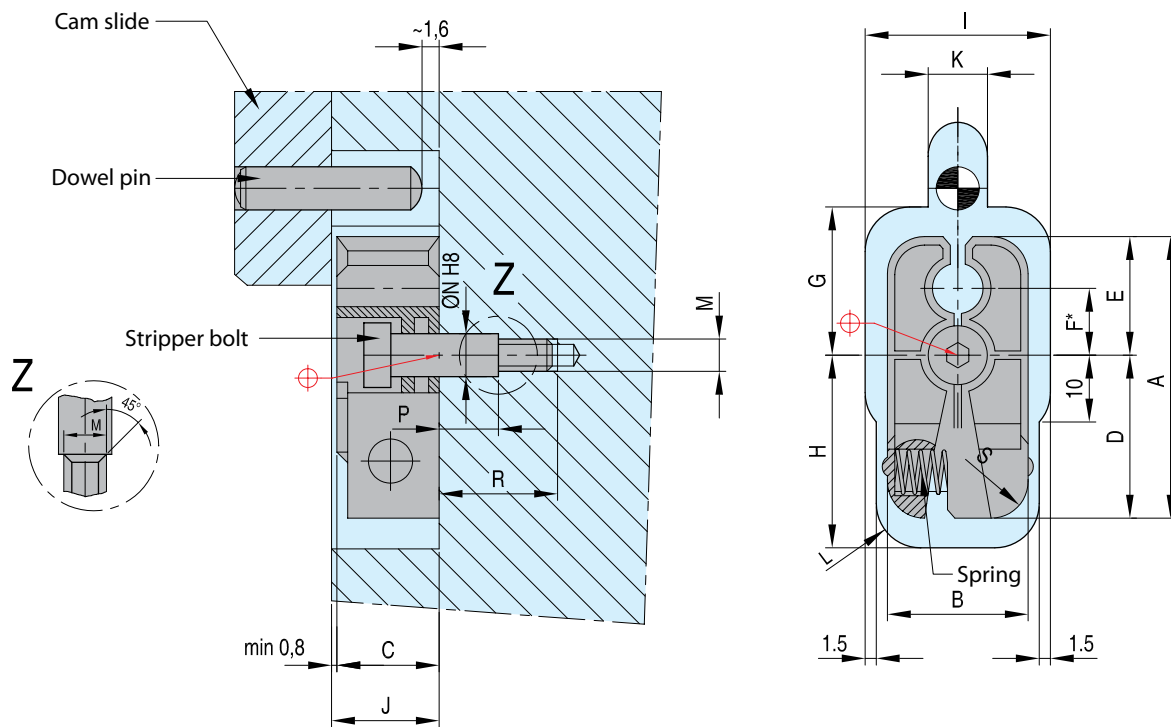
MRT

Slide retainers



REF	Slide retainer							Retainer pockets in mold								Max. slide weight (kg)		
	A	B	C	D	E	F*	S	G	H	I	J	K	L	M	N		P	R
<b>MRT-10M</b>	38	19	16	22	16	9,1	5	19	26	25	17	8	6	M5	6	6	15,5	10
<b>MRT-20M</b>	54	32	20	33	21	12,7	6	24	36	38	21	10	8	M6	8	8,5	20,5	20
<b>MRT-40M</b>	86	45	30	53	33	20,3	10	36	56	51	31	12	11	M8	10	10	25,0	40

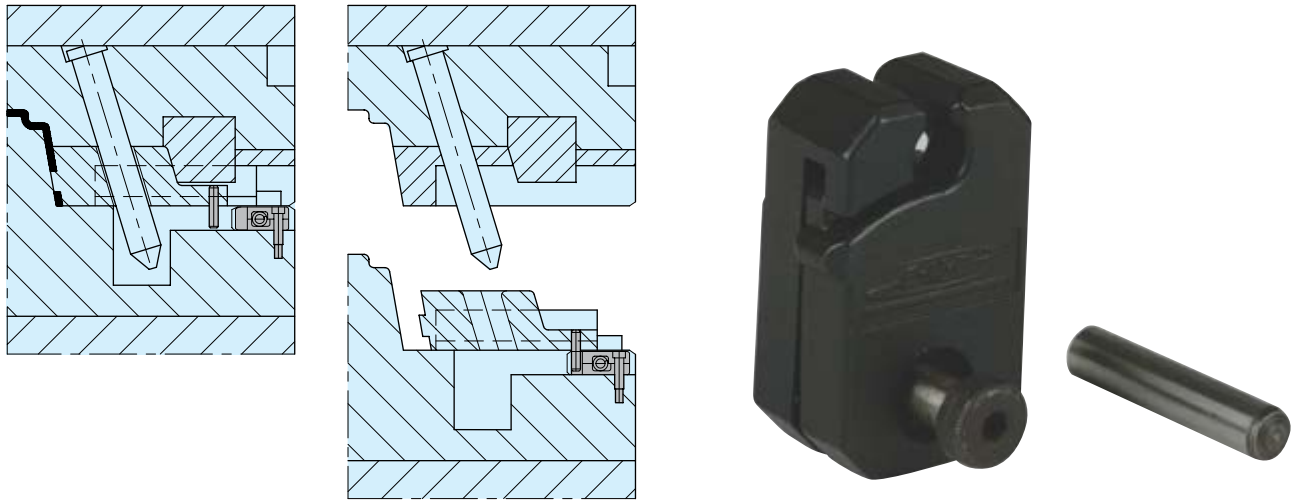
\*The distance from the center of the dowel pin to the center of the stripper bolt is critical



Replacement parts		
Dowel pin	REF	Tightening torque for stripper bolt Nm max.
<b>DP 6-30</b>	<b>PM 5x16</b>	10
<b>DP 8-40</b>	<b>PM 6x20</b>	15
<b>DP 10-60</b>	<b>PM 8x30</b>	20

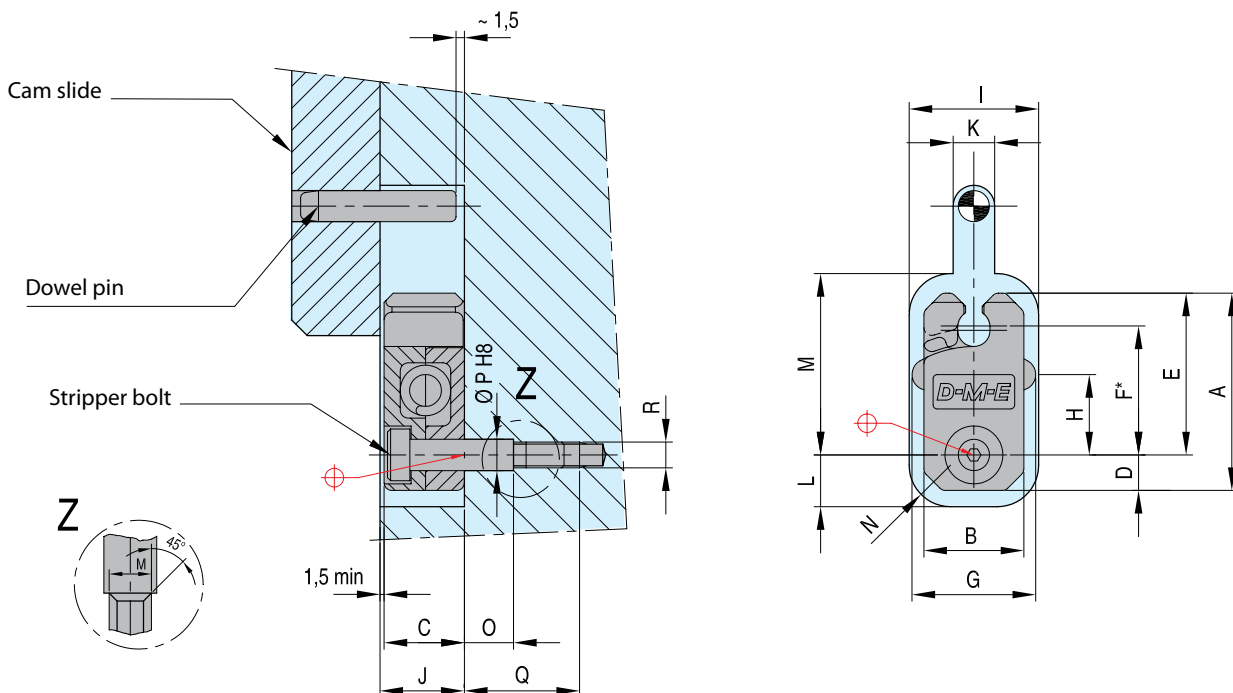
Slide retainers

PSM



REF	Cam slide									Retainer pockets in mold								Max. slide weight (kg)	
	A	B	C	D	E	F*	G	H	I	J	K	L	M	N	O	P	Q		R
<b>PSM 0001</b>	38	19	16	7	31,5	24,89	24,0	15,5	25,5	17,5	8	10,0	34,5	8	8,5	6	20	M5	10
<b>PSM 0002</b>	54	32	20	11	43,0	34,93	36,5	22,5	38,0	21,5	10	14,5	46,0	10	10,5	8	25	M6	20
<b>PSM 0003</b>	86	45	30	19	67,0	53,98	49,5	40,0	51,0	31,5	12	22,5	70,0	12	17,0	10	35	M8	40

\*The distance from the center of the dowel pin to the center of the stripper bolts is critical.



Replacement parts		
Dowel pin	REF	Tightening torque for stripper bolt Nm max.
<b>DP 6-30</b>	<b>PM 5x20</b>	10
<b>DP 8-40</b>	<b>PM 6x25</b>	15
<b>DP 10-60</b>	<b>PM 8x40</b>	20

## SRTM

Slide retainers

Mat.: 4140 - 28-32 HRC, Black Oxide

DME's new SRTM Series Slide Retainers reliably hold side actions from 4 to 36 kg (10 to 80 pounds).

The new slide retention design features Friction Free™ technology for smooth operation, especially in clean room or greaseless environments.

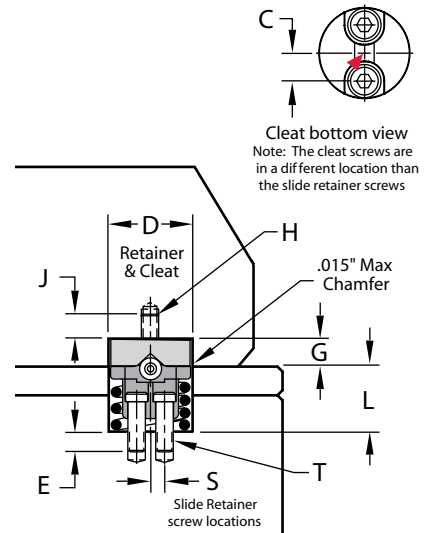
The compact design allows for installation in the mold base or wear plates.



REF Retainer	D +0,1 -0,0	L ±0,25	S ±0,5	T Screws (2)	E Max. thread depth	Max slide Weight (kg)	REF Cleat	G ±0,25	C ±0,5	H Screws (2)	J Min. thread depth
<b>SRTM-04 D</b>	15,9	4,06	3,95	M3	1,9	4,5	<b>SRTMC-04</b>	6,35	4,85	M3	6,35
<b>SRTM-13 D</b>	19,1	12,70	3,80	M4	4,8	13,5	<b>SRTMC-13</b>	6,35	6,35	M3	6,35
<b>SRTM-36 D</b>	22,3	19,05	3,80	M4	6,2	36,0	<b>SRTMC-36</b>	6,35	7,60	M3	6,35

The installation shown at the right is typical for all retainers and cleats. However, if not utilizing the optional cleat, a V-groove or ball cut can be machined as shown in the graphics at right. In both installations, the edge of the slide that would first contact the retainer should have a chamfer (shown) or a radius.

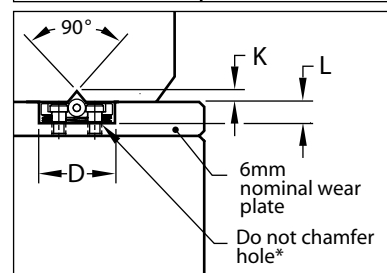
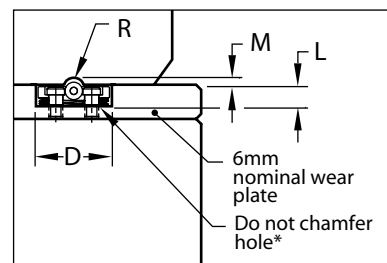
On the slot width, the cutter clearance must exceed the "D" dimension.



REF Retainer	V groove	Ball Cut	
	K mm	R mm	M mm
<b>SRTM-04 D</b>	1	2	0,23
<b>SRTM-13 D</b>	2	3	0,75
<b>SRTM-36 D</b>	2	3	0,75

### Technical Information:

Maximum operating temperature is 218° C.  
The roller is through hardened stainless steel and the axle is nitrided stainless steel.  
For P-20 slides, a Cleat is suggested versus adding a detent in the slide.  
Retainers and Cleats are sold separately and include all required screws.  
Replacement items are available. Refer to price list for catalog numbers and pricing, and contact Customer Service for availability.



\* chamfers machined will not allow the stripper bolt in the assembly to seat properly.