



MILACRON®

Flowmeters



ООО "СИСТЕМА" www.system.com.ru



DD

Tracer with Fluid Characteristic Indication (FCI) Technology



With the new Tracer Electronic Flowmeter, it is easier than ever to know exactly how much water is flowing through your water lines. In addition to flow rate, the Tracer™ provides a precise temperature reading of the water. It will calculate BTU's and display "TFLOW" message when Turbulent Flow is present. With the new information the Tracer™ will provide, you can manage your processes more completely and accurately.

Know Your Flow

There is no need to guess if water is flowing through each line or zone of a mold. Now you can know exactly how much is flowing. Your flow rate is displayed in 100ths of a gallon per minute. If you prefer, flow is displayed in liters per minute.

Know Your Water Temperature

In addition to providing current flow rate data, the Tracer™ also provides the current water temperature at the flowmeter. Used on the supply side, this can verify precise water temperature as it enters the mold. Put the Tracer™ in the out or return side and measure water temperature exiting the mold. Temperature can be displayed in either Fahrenheit or Celsius units, user selectable.

Know Your BTU's

The setup mode of the Tracer™ allows you to enter the incoming or supply water temperature. Then with the

Tracer™ attached to the return water line, it will calculate BTU per minute.

Know Your FCI's

Tracer flowmeter displays a special message ("TFLOW") when Turbulent Flow is present in your cooling water. Turbulent flow is the condition of optimum cooling efficiency. Tracer flowmeter calculates this condition based on the cooling water line size, water temperature and percentage of glycol (0, 10% 20% or 30%) as input in the setup mode.

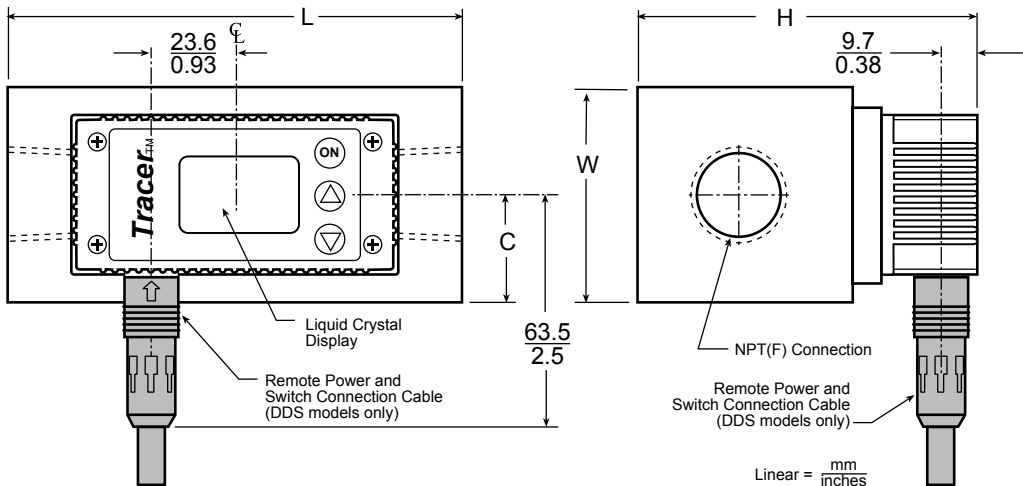
Versatile

The Tracer™ can be mounted in any position. It can accept flow in either direction. 3/8" units include a sight glass on the back for visual verification of flow. Select the optional quick-connect fittings and use the Tracer™ as a test kit to diagnose your water line problems.

Digital LCD Display

The digital display Tracer™ is battery powered and has an easy-to-read LCD which displays flow rate, temperature or BTU's at the touch of a button. A programmable auto shutoff feature extends battery life.

REF	Inlet/Outlet	Temp. Range	Temp. Accuracy	Flow	Flow Accuracy	Weight
DD3B	3/8" BSP inlet and outlet	0-82 °C	± 2%	2-30 lpm	± 5%	0,7 kg

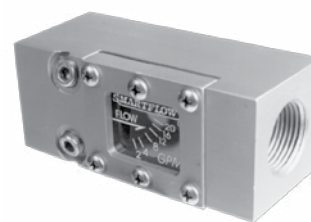
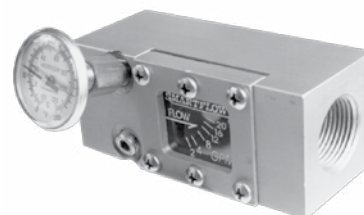
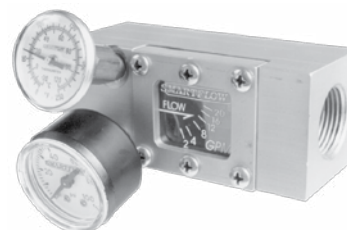


Mechanical Flowmeters
F
Features

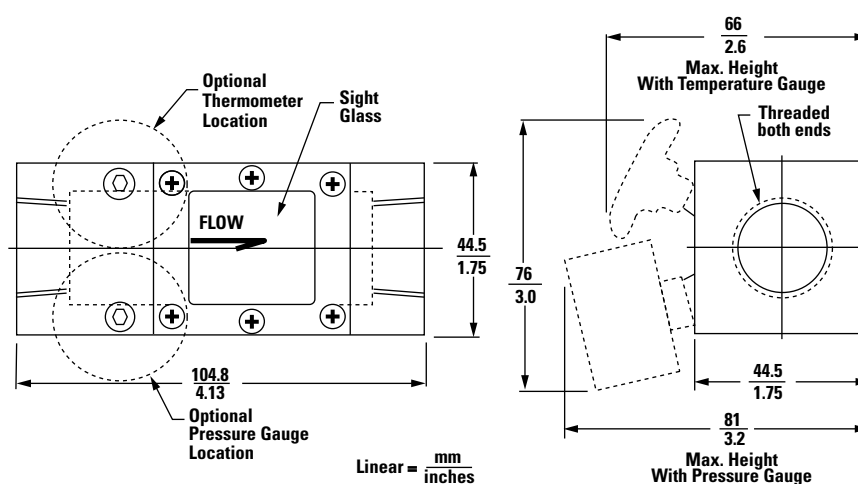
- Compact, rugged design
- 99° (210 °F) temperature rating
- Operating pressure 6,9 bar max
- Max flow 75lpm
- Aluminum body
- Polysulfone sight glass
- Can be mounted in any position
- Optional thermometer & pressure gauge

Materials & Options

Body.....	Anodized aluminum
Sight glass	Polysulfone
Gasket.....	Neoprene
Vane	Stainless steel
Spring	Stainless steel
Pin & screws	Stainless steel
Thermometer (opt.).....	0° 250°F/-20° -120°C
Pressure gauge (opt.)	0 to 100 PSI

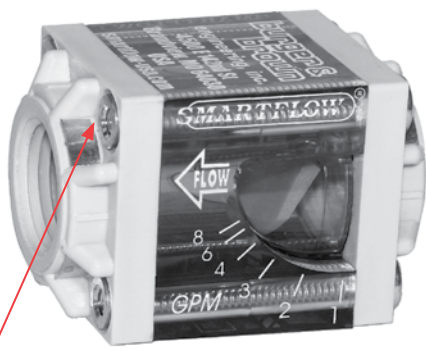
Flow

Flow & Temp.

Flow, Temp. & Pressure


REF	Flow	Measurement	Inlet/Outlet
F06BA75	7 – 75 lpm	Flow	3/4" BSP
F06BB75	7 – 75 lpm	Flow and temperature	3/4" BSP
F6BC375	7 – 75 lpm	Flow, temperature and pressure	3/4" BSP



FP

IceCube™ Flowmeters with Nylon End Caps



Stainless Steel Stabilizer Ring!

REF	Flow range	Measurements	Inlet Size
FP3BA30	4 – 30 lpm	Flow	3/8 " BSP
FP3BC30	4 – 30 lpm	Flow, temperature and pressure	3/8 " BSP

Reinforced Nylon End Caps reduce weight and cost of proven mechanical flowmeter design. Stainless steel stabilizer ring holds threads stable, preventing distortion. Nylon material provides dielectric insulator to help prevent galvanic action due to dissimilar metals.

General Description

Smartflow® Mechanical Flowmeters are durable, vane-operated devices that provide visual indication of flow rate in many different styles and sizes. Rugged wetted parts are compatible with many process liquids. Optional temperature and pressure gauges add functionality and flexibility to Smartflow® Flowmeters. Brass quick-connect fittings are available to create an excellent, portable tool for determining flow and locating clogged lines.

Features and Benefits

- Compact size works well in restricted-space locations
- Rugged construction gives years of dependable service
- 99°C (210°F) temperature rating allows installation into a wide range of applications

- Optional temperature and pressure gauges display pressure and temperature information in addition to flow in one unit
- No mounting restrictions ease installation in any position without extra brackets or hardware

Wetted Parts and Materials

End Caps	Glass-filled nylon
Flow Body	Polysulfone
Vane	Glass-filled nylon
Spring	Stainless steel
O-Rings.....	EPDM
Cap Screws	Stainless steel
Optional Quick-Connect Fittings	Brass

Specifications

Flow Accuracy	±10% full scale
Operating Temperature	99°C max. (210°F max.)
Operating Pressure	100 PSI max. (6.9 bar max.)
Dial Thermometer	–20° to 120°C (0° to 250°F)
	±2% accuracy (full scale)
Pressure Gauge	0 to 700 Kpa (0 to 100 psi)
	±3% accuracy (full scale)

